

EXTENSION 1

# 'WE'VE CREATED A SEAMLESS LINK'

*Mark and Vicki Richardson's extension unites the open-plan kitchen-diner with the garden to create a great entertaining space*



← **WELL MERGED**

Built using reclaimed bricks, the extension blends in with the traditional Edwardian facade and also complements the house next door

→ **CITY LIFE**

Designed to the couple's specifications, the bespoke glass splashback features a skyline of London's most iconic riverside buildings, from Big Ben to the Olympic Park

BEFORE



## EXTENSION DETAILS

**HOMEOWNERS**

Mark Richardson, a chief financial officer, and his wife Vicki, a special-needs advisor

**AGES** Both 50

**FAMILY** Joe, 24, Bethany, 22, and Naomi, 20

**LOCATION** South-east London

**PROPERTY** Six-bedroom, Edwardian semi

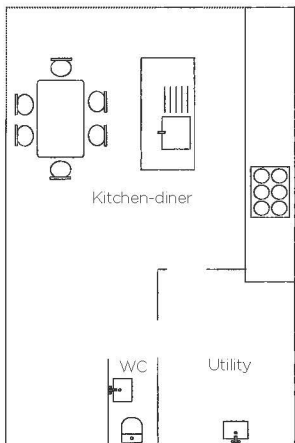
**COST OF THE NEW EXTENSION**

<b>Professional fees</b>	£13,000
<b>Building work</b>	£124,000
<b>Glazing</b>	£18,000
<b>Flooring</b>	£5,000
<b>Kitchen</b>	£22,800
<b>Appliances</b>	£9,000
<b>Worktops</b>	£5,000
<b>Splashback</b>	£1,800

**TOTAL** £198,600



**STYLING TIP**  
*Using the same flooring inside and out visually extends the living space, creating an affinity between your home and garden*



**← VIEW THE FLOORPLAN**

The long, wide extension houses a utility room and WC at the front of the property, with a kitchen-diner to the rear. Cooking appliances and units line one wall, separated from the dining area by a central island

**PROJECT BRIEF**  
 To redesign and extend the ground floor to create a family kitchen-diner with direct access to the garden via bi-fold doors

**T**wenty years after moving into their London home, Vicki Richardson and her husband Mark decided that the time was now right to make some major improvements to the ground floor.

With damp issues at the back of the house, a kitchen that hadn't been changed in more than two decades and with no real view of the garden, they felt the space was in need of a complete overhaul. 'Although we already had a kitchen-diner, it was a long room that stretched the length of the property,' explains Mark. 'Our dining table was in the front bay window, so at mealtimes we watched people walking by on the street instead of looking out to the back garden.'

Keen to create a large family zone that is ideal for entertaining and makes the most of the outdoor area, the couple met with Simon Whitehead Architects. 'Although we knew what we wanted to achieve, we had never been able to come up with a shape or structure ▶



↑ OPEN ALL SEASONS

Bi-fold doors in a frameless corner design ensures the view of the garden is unobstructed by steel structures or posts

→ PRACTICAL LAYOUT

The kitchen has a galley-style design, with a large island unit separating the main workspace and dining area



that worked with an early 19th-century house and would give us all the space we needed inside,' says Mark. 'Simon's idea of building an extension across two thirds of the house made everything fall into place.'

As the couple wanted to use reclaimed bricks, it made sense to remove the dated render, which needed renewing anyway, to reveal the original London stock brickwork beneath. 'We live in a conservation area, so we were always mindful of adding something that was sympathetic to the Edwardian era,' says Mark.

To match the high ceilings in the rest of the house, the floor of the new kitchen was lowered to create more height. The same procedure was applied to the patio, to make a level threshold between the extension and terrace, and Cornish slate floor tiles were laid inside and out to form a seamless link. Now, thanks to the frameless open-corner arrangement with its two sets of bi-folding doors, the family can enjoy the outside space while preparing and eating meals or entertaining friends whatever the weather. 'It's one of our favourite features,' says Mark. 'It's fantastic for parties as it turns the garden into another room.'

To give the kitchen a unique focal point, the couple chose a bespoke glass splashback, which they found online. Featuring famous London landmarks along the Thames, from Big Ben in Westminster across to the Olympic Park in the east, it offers a panoramic snapshot of the city. Meanwhile, the wall cabinets in

white gloss are teamed with base units in a matt pale-grey and topped with sleek Corian worksurfaces.

Although the family have always enjoyed spending time together, adding the extension means they now have a much-improved layout where they can be much more sociable, especially as the children are now adults. 'No one ever feels shut off from what's going on when they're in the kitchen,' says Mark. 'And we also tend to sit round the table for longer. It may have taken us two decades to create this space, but I think we have an area that will be perfect for another 20 years.'

SHOPPING LIST

**KITCHEN** Hacker Systemat units in pebble grey and crystal, £22,800; Corian worktops in glacier white, £5,000, all DT Kitchens. Bespoke glass splashback, £1,800. **APPLIANCES** For similar, try H6100BM oven with microwave; H2661-1BP oven, £1,099; KM6118 induction hob, £1,075, all Miele. Siemens KA62DA71GB fridge-freezer, £1,729, Currys. HC3300 boiling-water tap, £715, Insinkerator **GLAZING** Window and bi-fold doors, £18,000, Tolland Glass **FLOORING** Slate tiles, £9,600, Delabole Slate **FURNITURE** For similar pendant lights, try the Octo lamp, £585 each, Skandium. Cross extending table by Matthew Hilton, £1,785, Case Furniture. Eames DSR chairs with chrome base, £226, The Conran Shop

*Things we love*

♥ 'The **oak table** is very practical, as it can be extended to seat 14 comfortably, which is ideal because we love having large family gatherings.'

♥ 'We love how the **upper wall units in white gloss and the bases in matt grey** work so well together. They also blend in with the black ovens and splashback.'

♥ 'Our handy **kitchen gadgets**, especially the boiling-hot water tap and the built-in coffee machine. I don't know how we managed without them before.'